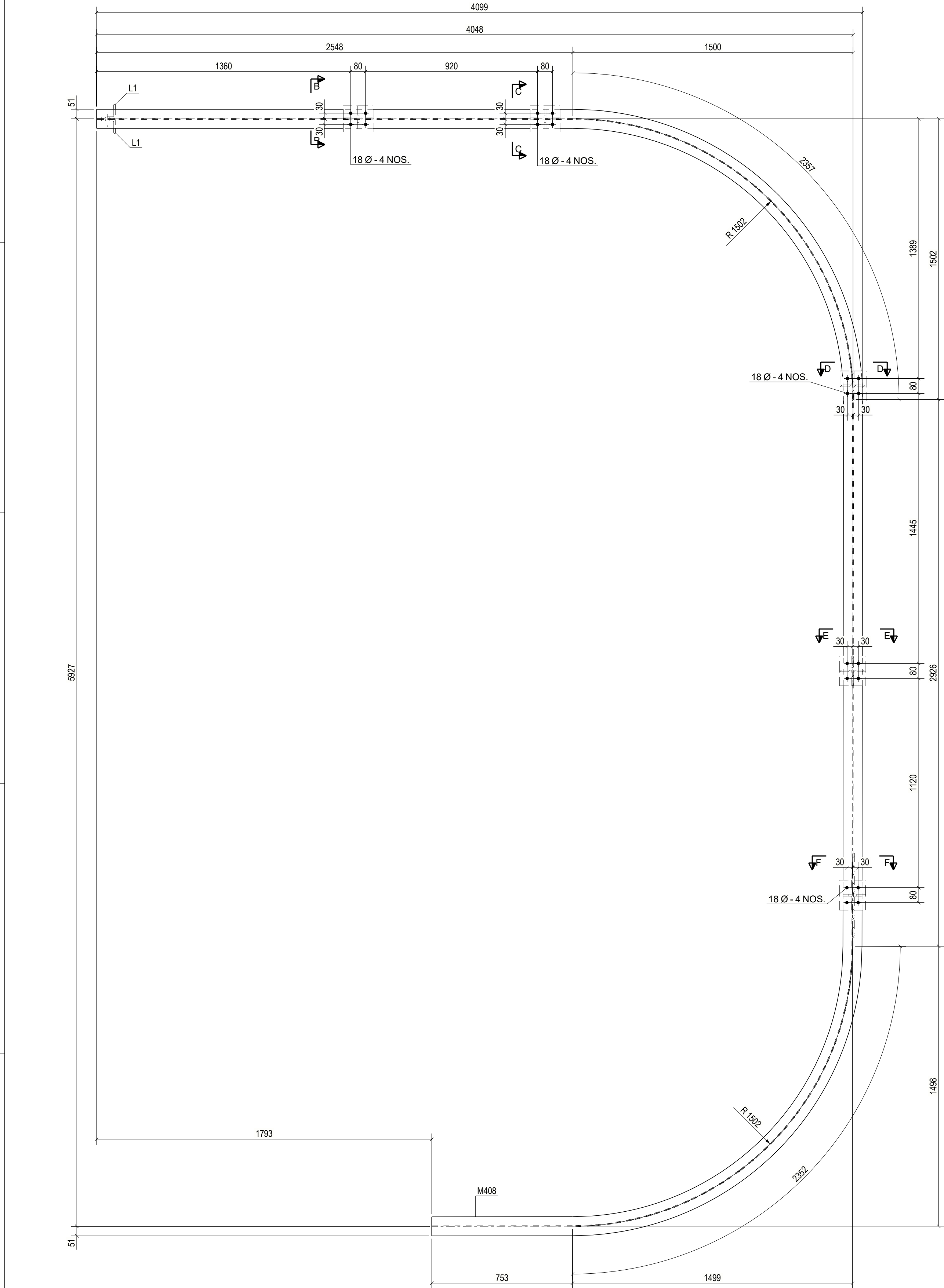
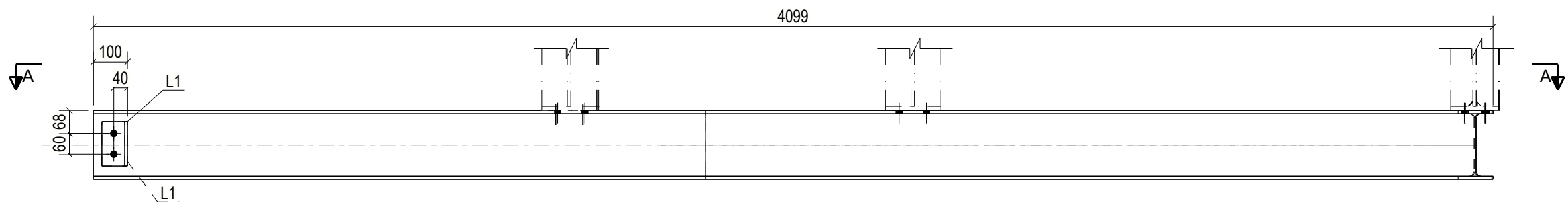


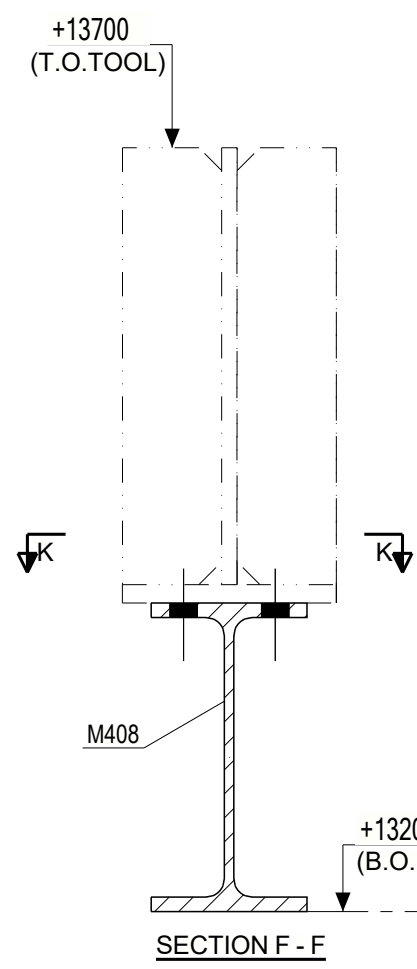
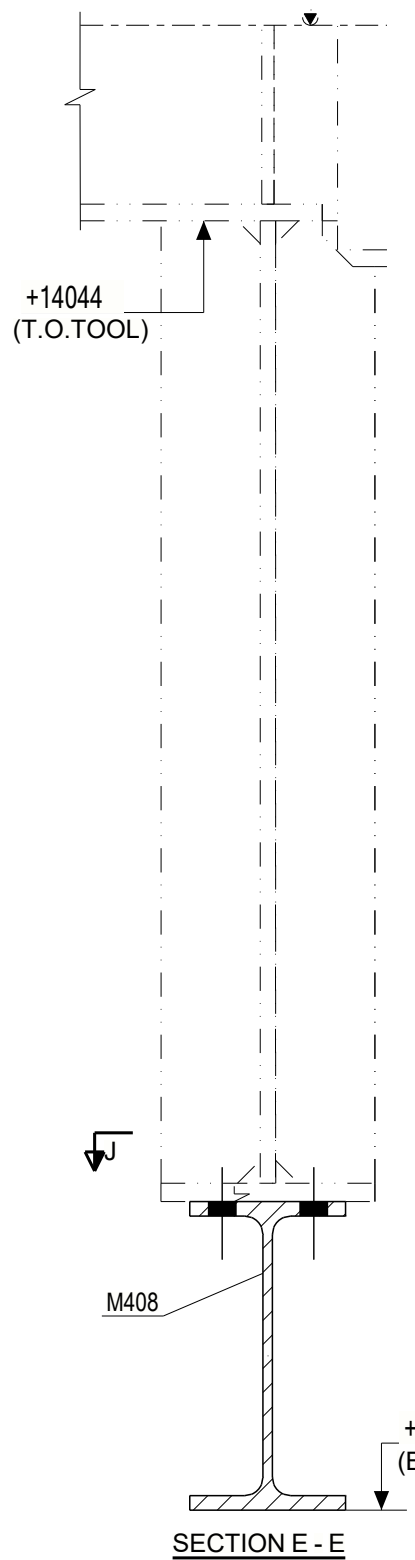
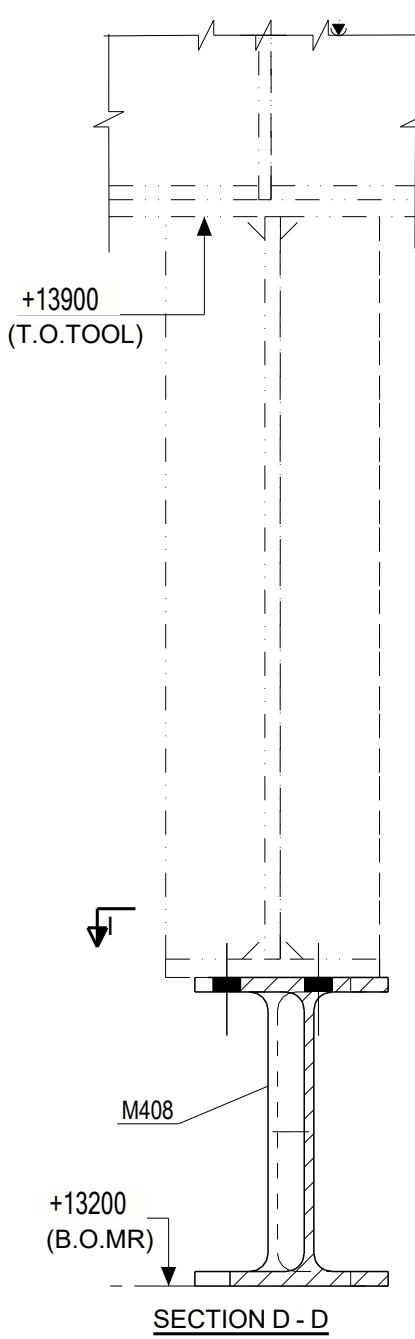
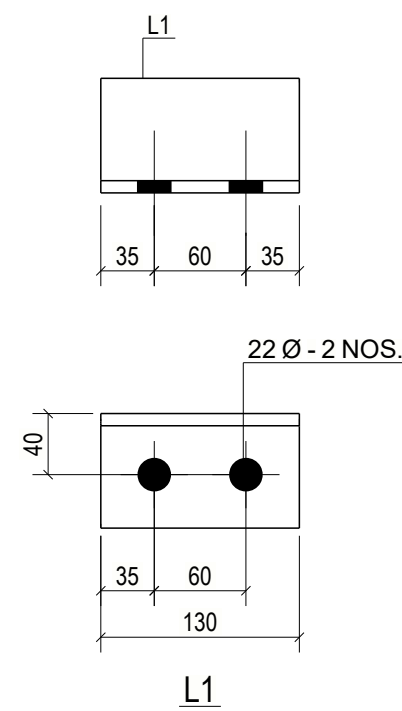
GRID LOCATION		
MR3	A-C/3-2	+13.402



SECTION A-A

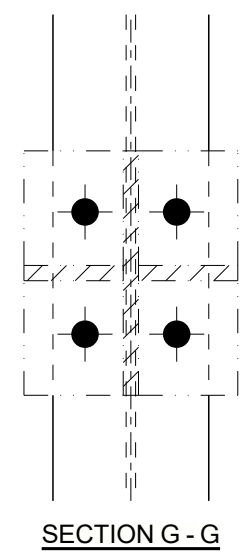
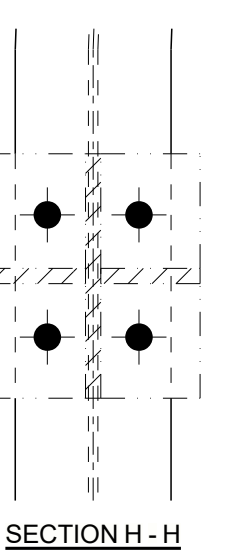
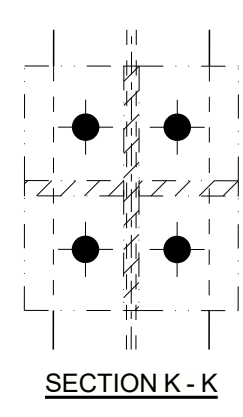
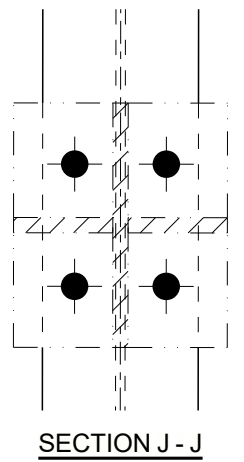
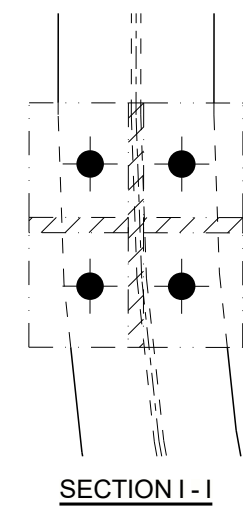


<b>BH&amp;L</b> BHARAT HEAVY ELECTRICALS LIMITED INDUSTRIAL SYSTEMS GROUP	
This approval status shall be interpreted as laid down in the contract and it shall not relieve the contractor from his contractual obligations. Contractor is responsible for any errors and fulfillment of detailed requirements as per approved GA drawing and contract document.	
<b>APPROVAL CATEGORY AWARDED [CAT-I]</b>	
[CAT-I] = APPROVED	
[CAT-II] = APPROVED WITH COMMENTS AS NOTED	
[CAT-III] = NOT APPROVED	
[CAT-IV] = REFERENCE DRAWING	
DEPARTMENT	ENG-G-CIVIL
NAME	SIGNATURE
ABDULLAH	



BILL OF MATERIALS			ASSEMBLY MK'D : MR3			ASSY QTY : 1		
Item Mark	Qty./ Assembly	Profile Size	Wt./Meter (Kgs.)	Length (In mm.)	Wt./Item (Kgs.)	Total Qty.	Total Wt. (Kgs.)	Material /Remarks
M408	1	NPB200X100X25.09	25.09	10779	270.42	1	270.42	E250A
L1	2	ISA75X75X8	8.90	130	1.16	2	2.33	E250A
TOTAL WEIGHT (Kgs.)							272.74	

BOLT LIST			
ASSEMBLY MARK	FIELD BOLT	LENGTH	TOTAL QTY
MR3	16 DIA HSFG 8.8	50	28
MR3	20 DIA HSFG 8.8	55	2
TOTAL			30



- NOTES:-
- ALL DIMENSIONS ARE IN mm. & LEVELS ARE IN MTR.
  - ALL MEMBERS AND GUSSET PLATES TO BE CUT AFTER FULL SCALE SHOP LAYOUT BEFORE FABRICATION.
  - ALL WELDS ARE 6mm. THICK U.N.O
  - PERMANENT BOLTS SHOWN THUS ----
  - SURFACE TO BE FINISHED ARE SHOWN THUS ----
  - 17.50 HOLES FOR M16 BOLTS FOR L 50x50x6
  - FOR MARKING REFER DRAWING NO. BCC-BHEL-JAGD-LHP-JT-1-E01 TO E14
  - THIS DRAWING HAS BEEN PREPARED BASED ON DESIGN DRG. NO. 9585-001-109-PVC-C-448 & 449
  - THIS DRAWING SHALL NOT BE SCALED . ONLY WRITTEN DIMENSION SHALL BE FOLLOWED.

REV.	DESCRIPTION	DATE	DRAWN	CHKD.	APPD.
1	REVISED AS PER BH&L COMMENT	24.09.2022			
0	ISSUED FOR APPROVEL	03.08.2022			

CUSTOMER	<b>NTPC Limited</b>
PROJECT	3x800MW PATRATU SUPER THERMAL POWER PROJECT, PATRATU
EPC CONTRACTOR	<b>BH&amp;L</b> BHARAT HEAVY ELECTRICALS LTD.
SUB CONTRACTOR	<b>BH&amp;L</b> BHARAT HEAVY ELECTRICALS LTD. JAGDISHPUR
CONSULTANT	<b>BCC</b> BHARAT CONSTRUCTION COMPANY KOLKATA - RANCHI - DELHI
TITLE	LHP-JT-1 DETAIL OF MONORAIL MKD.MR3
SCALE: 1:20	DRAWN: B.C.C. CHECKED: S.S. APPROVED: A.C.
DRAWING NO. BCC-BHEL-JAGD-LHP-JT-1-MR3	REV 1